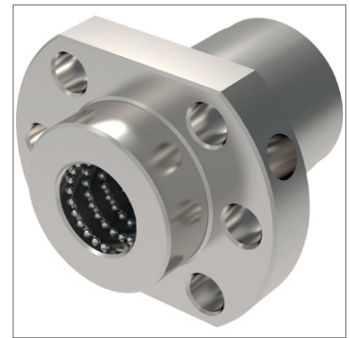
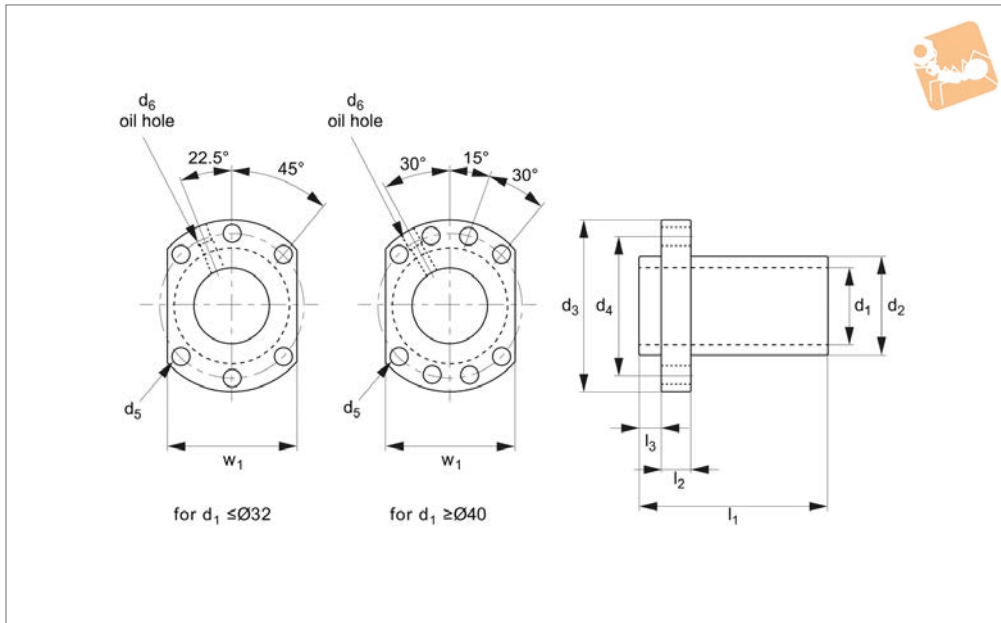
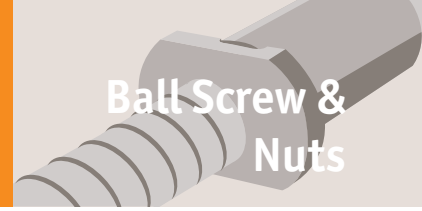




# Centre Flanged Ball Nuts

## Ball Screw & Nuts



**L1372**

BALL SCREW & NUTS

### Material

Steel (16MnCr5 or 100Cr6), with Vulkolan seals.

### Technical Notes

Produced to DIN 69051 form B.

Axial play for 5mm pitch = 0,05mm; for 10mm pitch = 0,10mm; for multi-starts = 0,20mm.

Preload max. 5% of max. dynamic load.

For axial run-out, concentricity and parallelism figures see technical pages.

With lubrication and fixing holes.

For use with ball screws no. L1375.

### Tips

For miniature ball screws  $\text{Ø}6$  to  $\text{Ø}14$  see part no. L1379.

### Important Notes

Fit ball nut to screw using the sleeve provided. Offer up the ball nut to the screw and slide carefully on. Do not remove the ball nut from the sleeve provided - the ball bearings can come loose rendering the ball nut unusable.

Order No.	$d_1$ for screw	Pitch	$d_2$ tol. G6	$d_3$	$d_4$	$d_5$	$d_6$	$l_1$	$l_2$	$l_3$	$w_1$	Ball dia.	Dyn. load C kN max.	Static load $C_0$ kN max.	Stiffness N/ $\mu$ m
L1372.16-16-1.8	15	16	28	48	38	5.5	M 6	43	10	5.0	40	2.78	5.41	11.15	14
L1372.16-16-2.8	15	16	28	48	38	5.5	M 6	59	10	5.0	40	2.78	7.92	17.34	22
L1372.16-20-1.8	15	20	28	48	38	5.5	M 6	50	10	5.0	40	2.78	5.43	11.47	14
L1372.20-10-3.8	20	10	36	58	47	6.6	M 6	52	10	7.0	44	3.18	14.86	37.58	40
L1372.20-20-1.8	20	20	36	58	47	6.6	M 6	52	10	7.0	44	3.18	7.49	17.24	19
L1372.20-20-2.8	20	20	36	58	47	6.6	M 6	72	10	7.0	44	3.18	10.96	26.81	29
L1372.25-25-1.8	25	25	40	62	51	6.6	M 6	60	12	7.0	48	3.18	8.26	21.56	22
L1372.25-25-2.8	25	25	40	62	51	6.6	M 6	85	12	7.0	48	3.18	12.08	33.54	34
L1372.32-20-2.8	31	20	50	80	65	9.0	M 6	72	12	9.0	62	3.97	18.70	53.76	43
L1372.32-32-1.8	31	32	50	80	65	9.0	M 6	78	12	9.0	62	3.97	12.32	33.59	27
L1372.32-32-2.8	31	32	50	80	65	9.0	M 6	110	12	9.0	62	3.97	18.02	52.25	42
L1372.40-20-2.8	38	20	63	93	78	9.0	M 8	78	14	9.0	70	6.35	38.82	105.07	54
L1372.40-40-1.8	38	40	63	93	78	9.0	M 8	96	14	9.0	70	6.35	25.35	65.19	34
L1372.40-40-2.8	38	40	63	93	78	9.0	M 8	136	14	9.0	70	6.35	37.06	101.41	52
L1372.50-20-3.8	48	20	75	110	93	11.0	M 8	98	18	10.5	85	6.35	56.37	181.27	87
L1372.50-50-1.8	48	50	75	110	93	11.0	M 8	117	18	10.5	85	6.35	28.89	85.79	42
L1372.50-50-2.8	48	50	75	110	93	11.0	M 8	167	18	10.5	85	6.35	42.24	133.46	65