

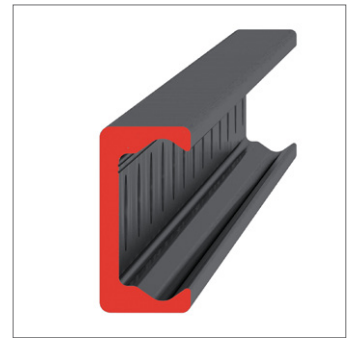
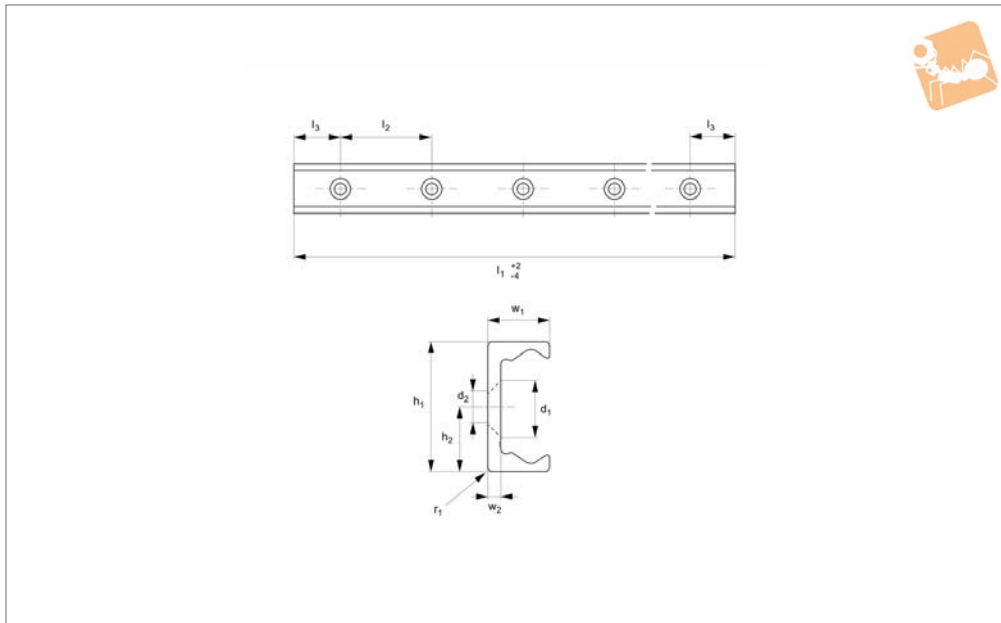


# Light Duty T Rail

countersunk holes



## Long Linear Rails



### L1918.18T-V

LONG LINEAR RAILS

#### Material

Carbon steel. Raceways induction hardened and ground.  
Electrolytic zinc-plated (excluding raceways).

#### Technical Notes

The T rail is a master rail and is usually

used with a U slave rails (allows for misalignment).

This is the T-V countersunk rail which is usually used with a corresponding U-V rail. For fixing use countersunk DIN 7991 screws.

Weight: 0,55 Kg/m.

#### Tips

Standard carriages are the L1918.CL series.

Order No.	d <sub>2</sub> for screws	h <sub>1</sub>	h <sub>2</sub>	l <sub>1</sub>	l <sub>2</sub>	l <sub>3</sub>	r <sub>1</sub>	w <sub>1</sub>	w <sub>2</sub>
L1918.18T-0160-V	M4	18	9	160	80	40	1.5	8.25	2.8
L1918.18T-0240-V	M4	18	9	240	80	40	1.5	8.25	2.8
L1918.18T-0320-V	M4	18	9	320	80	40	1.5	8.25	2.8
L1918.18T-0400-V	M4	18	9	400	80	40	1.5	8.25	2.8
L1918.18T-0480-V	M4	18	9	480	80	40	1.5	8.25	2.8
L1918.18T-0560-V	M4	18	9	560	80	40	1.5	8.25	2.8
L1918.18T-0640-V	M4	18	9	640	80	40	1.5	8.25	2.8
L1918.18T-0720-V	M4	18	9	720	80	40	1.5	8.25	2.8
L1918.18T-0800-V	M4	18	9	800	80	40	1.5	8.25	2.8
L1918.18T-0880-V	M4	18	9	880	80	40	1.5	8.25	2.8
L1918.18T-0960-V	M4	18	9	960	80	40	1.5	8.25	2.8
L1918.18T-1040-V	M4	18	9	1040	80	40	1.5	8.25	2.8
L1918.18T-1120-V	M4	18	9	1120	80	40	1.5	8.25	2.8
L1918.18T-1200-V	M4	18	9	1200	80	40	1.5	8.25	2.8
L1918.18T-1280-V	M4	18	9	1280	80	40	1.5	8.25	2.8
L1918.18T-1360-V	M4	18	9	1360	80	40	1.5	8.25	2.8
L1918.18T-1440-V	M4	18	9	1440	80	40	1.5	8.25	2.8
L1918.18T-1520-V	M4	18	9	1520	80	40	1.5	8.25	2.8
L1918.18T-1600-V	M4	18	9	1600	80	40	1.5	8.25	2.8
L1918.18T-1680-V	M4	18	9	1680	80	40	1.5	8.25	2.8
L1918.18T-1760-V	M4	18	9	1760	80	40	1.5	8.25	2.8
L1918.18T-1840-V	M4	18	9	1840	80	40	1.5	8.25	2.8
L1918.18T-1920-V	M4	18	9	1920	80	40	1.5	8.25	2.8
L1918.18T-2000-V	M4	18	9	2000	80	40	1.5	8.25	2.8
L1918.18T-2080-V	M4	18	9	2080	80	40	1.5	8.25	2.8
L1918.18T-2160-V	M4	18	9	2160	80	40	1.5	8.25	2.8
L1918.18T-2240-V	M4	18	9	2240	80	40	1.5	8.25	2.8
L1918.18T-2320-V	M4	18	9	2320	80	40	1.5	8.25	2.8
L1918.18T-2400-V	M4	18	9	2400	80	40	1.5	8.25	2.8
L1918.18T-2480-V	M4	18	9	2480	80	40	1.5	8.25	2.8
L1918.18T-2560-V	M4	18	9	2560	80	40	1.5	8.25	2.8

# Long Linear Rails

## Light Duty T Rail countersunk holes



Order No.	d <sub>2</sub> for screws	h <sub>1</sub>	h <sub>2</sub>	l <sub>1</sub>	l <sub>2</sub>	l <sub>3</sub>	r <sub>1</sub>	w <sub>1</sub>	w <sub>2</sub>
<b>L1918.18T-2640-V</b>	M4	18	9	2640	80	40	1.5	8.25	2.8
<b>L1918.18T-2720-V</b>	M4	18	9	2720	80	40	1.5	8.25	2.8
<b>L1918.18T-2800-V</b>	M4	18	9	2800	80	40	1.5	8.25	2.8
<b>L1918.18T-2880-V</b>	M4	18	9	2880	80	40	1.5	8.25	2.8
<b>L1918.18T-2960-V</b>	M4	18	9	2960	80	40	1.5	8.25	2.8
<b>L1918.18T-3040-V</b>	M4	18	9	3040	80	40	1.5	8.25	2.8

LONG LINEAR RAILS