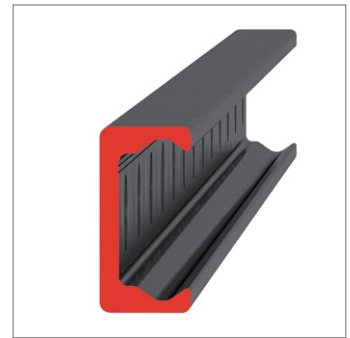
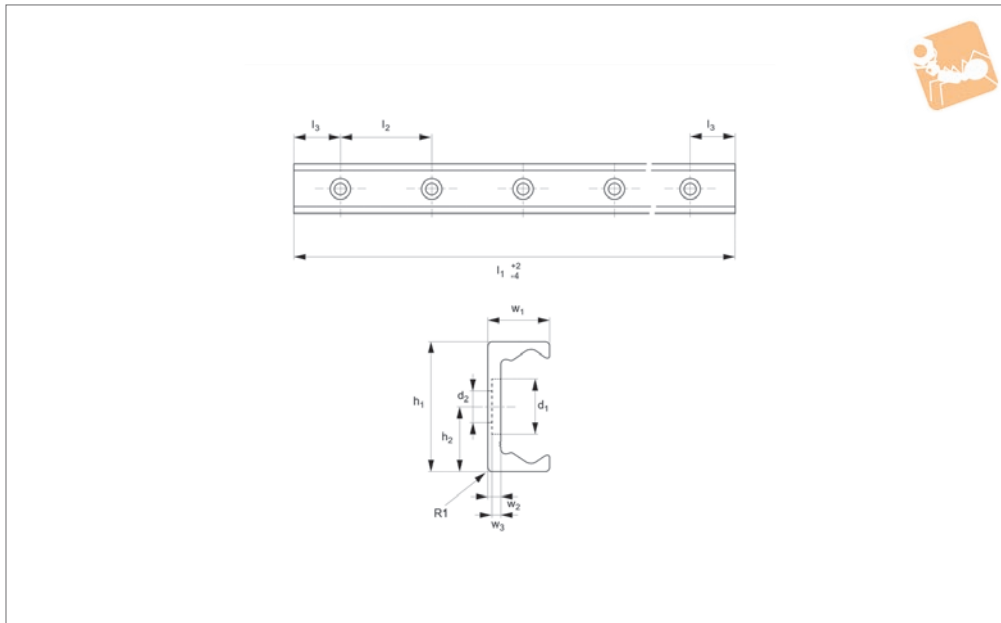




Medium Duty T Rail

counterbored holes

Long Linear Rails



L1928.28T-C

LONG LINEAR RAILS

Material

Carbon steel. Raceways induction hardened and ground.
Electrolytic zinc-plated (excluding raceways).

Technical Notes

The T rail is a master rail and is usually

used with a U slave rail (allows for system misalignment).

This is the counterbored rail type (most popular), which is usually used with a corresponding U-C rail.
Special low profile Torx head screws provided free of charge.

Weight: 1,0 Kg/m.

Tips

Standard carriages are the L1928.N versions (die cast aluminium alloy with wipers). Alternatively the L1928.C type is also available (without wipers).

Order No.	d ₁	d ₂ for screws	h ₁	h ₂	l ₁	l ₂	l ₃	w ₁	w ₂	w ₃
L1928.28T-0240-C	11	M5	28	14	240	80	40	12.3	3	2
L1928.28T-0320-C	11	M5	28	14	320	80	40	12.3	3	2
L1928.28T-0400-C	11	M5	28	14	400	80	40	12.3	3	2
L1928.28T-0480-C	11	M5	28	14	480	80	40	12.3	3	2
L1928.28T-0560-C	11	M5	28	14	560	80	40	12.3	3	2
L1928.28T-0640-C	11	M5	28	14	640	80	40	12.3	3	2
L1928.28T-0720-C	11	M5	28	14	720	80	40	12.3	3	2
L1928.28T-0800-C	11	M5	28	14	800	80	40	12.3	3	2
L1928.28T-0880-C	11	M5	28	14	880	80	40	12.3	3	2
L1928.28T-0960-C	11	M5	28	14	960	80	40	12.3	3	2
L1928.28T-1040-C	11	M5	28	14	1040	80	40	12.3	3	2
L1928.28T-1120-C	11	M5	28	14	1120	80	40	12.3	3	2
L1928.28T-1200-C	11	M5	28	14	1200	80	40	12.3	3	2
L1928.28T-1280-C	11	M5	28	14	1280	80	40	12.3	3	2
L1928.28T-1360-C	11	M5	28	14	1360	80	40	12.3	3	2
L1928.28T-1440-C	11	M5	28	14	1440	80	40	12.3	3	2
L1928.28T-1520-C	11	M5	28	14	1520	80	40	12.3	3	2
L1928.28T-1600-C	11	M5	28	14	1600	80	40	12.3	3	2
L1928.28T-1680-C	11	M5	28	14	1680	80	40	12.3	3	2
L1928.28T-1760-C	11	M5	28	14	1760	80	40	12.3	3	2
L1928.28T-1840-C	11	M5	28	14	1840	80	40	12.3	3	2
L1928.28T-1920-C	11	M5	28	14	1920	80	40	12.3	3	2
L1928.28T-2000-C	11	M5	28	14	2000	80	40	12.3	3	2
L1928.28T-2080-C	11	M5	28	14	2080	80	40	12.3	3	2
L1928.28T-2160-C	11	M5	28	14	2160	80	40	12.3	3	2
L1928.28T-2240-C	11	M5	28	14	2240	80	40	12.3	3	2
L1928.28T-2320-C	11	M5	28	14	2320	80	40	12.3	3	2
L1928.28T-2400-C	11	M5	28	14	2400	80	40	12.3	3	2
L1928.28T-2480-C	11	M5	28	14	2480	80	40	12.3	3	2
L1928.28T-2560-C	11	M5	28	14	2560	80	40	12.3	3	2
L1928.28T-2640-C	11	M5	28	14	2640	80	40	12.3	3	2



Order No.	d ₁	d ₂ for screws	h ₁	h ₂	l ₁	l ₂	l ₃	w ₁	w ₂	w ₃
L1928.28T-2720-C	11	M5	28	14	2720	80	40	12.3	3	2
L1928.28T-2800-C	11	M5	28	14	2800	80	40	12.3	3	2
L1928.28T-2880-C	11	M5	28	14	2880	80	40	12.3	3	2
L1928.28T-2960-C	11	M5	28	14	2960	80	40	12.3	3	2
L1928.28T-3040-C	11	M5	28	14	3040	80	40	12.3	3	2
L1928.28T-3120-C	11	M5	28	14	3120	80	40	12.3	3	2
L1928.28T-3200-C	11	M5	28	14	3200	80	40	12.3	3	2
L1928.28T-3280-C	11	M5	28	14	3280	80	40	12.3	3	2
L1928.28T-3360-C	11	M5	28	14	3360	80	40	12.3	3	2
L1928.28T-3440-C	11	M5	28	14	3440	80	40	12.3	3	2
L1928.28T-3520-C	11	M5	28	14	3520	80	40	12.3	3	2
L1928.28T-3600-C	11	M5	28	14	3600	80	40	12.3	3	2
L1928.28T-3680-C	11	M5	28	14	3680	80	40	12.3	3	2
L1928.28T-3760-C	11	M5	28	14	3760	80	40	12.3	3	2
L1928.28T-3840-C	11	M5	28	14	3840	80	40	12.3	3	2
L1928.28T-3920-C	11	M5	28	14	3920	80	40	12.3	3	2
L1928.28T-4000-C	11	M5	28	14	4000	80	40	12.3	3	2
L1928.28T-4080-C	11	M5	28	14	4080	80	40	12.3	3	2