

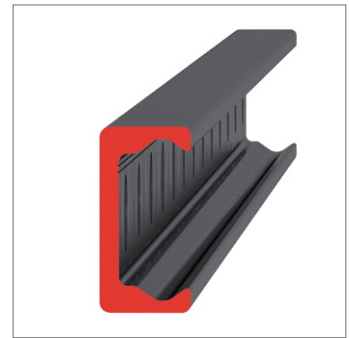
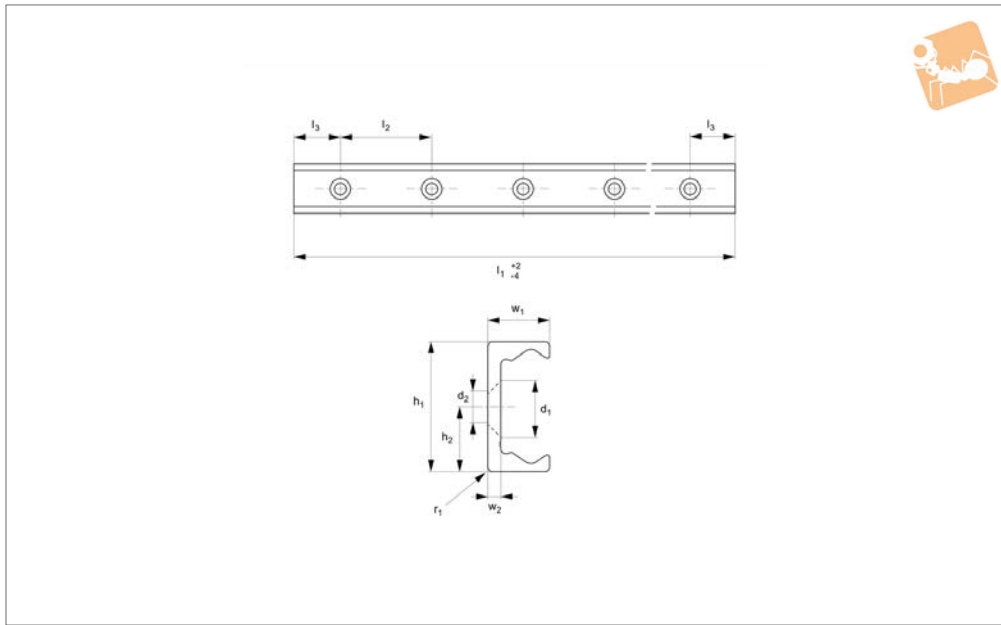


Medium Duty T Rail

countersunk holes



Long Linear Rails



L1935.35T-V

LONG LINEAR RAILS

Material

Carbon steel. Raceways induction hardened and ground.
Electrolytic zinc-plated (excluding raceways).

Technical Notes

The T rail is a master rail and is usually

used with a U slave rails (allows for misalignment).

This is the T-V countersunk rail which is usually used with a corresponding U-V rail. For fixing use countersunk DIN 7991 screws.

Weight: 1,7 Kg/m.

Tips

Standard carriages are the L1935.CL series.

Order No.	d ₂ for screws	h ₁	h ₂	l ₁	l ₂	l ₃	r ₁	w ₁	w ₂
L1935.35T-0240-V	M6	35	17.5	240	80	40	1	16	3.5
L1935.35T-0320-V	M6	35	17.5	320	80	40	1	16	3.5
L1935.35T-0400-V	M6	35	17.5	400	80	40	1	16	3.5
L1935.35T-0480-V	M6	35	17.5	480	80	40	1	16	3.5
L1935.35T-0560-V	M6	35	17.5	560	80	40	1	16	3.5
L1935.35T-0640-V	M6	35	17.5	640	80	40	1	16	3.5
L1935.35T-0720-V	M6	35	17.5	720	80	40	1	16	3.5
L1935.35T-0800-V	M6	35	17.5	800	80	40	1	16	3.5
L1935.35T-0880-V	M6	35	17.5	880	80	40	1	16	3.5
L1935.35T-0960-V	M6	35	17.5	960	80	40	1	16	3.5
L1935.35T-1040-V	M6	35	17.5	1040	80	40	1	16	3.5
L1935.35T-1120-V	M6	35	17.5	1120	80	40	1	16	3.5
L1935.35T-1200-V	M6	35	17.5	1200	80	40	1	16	3.5
L1935.35T-1280-V	M6	35	17.5	1280	80	40	1	16	3.5
L1935.35T-1360-V	M6	35	17.5	1360	80	40	1	16	3.5
L1935.35T-1440-V	M6	35	17.5	1440	80	40	1	16	3.5
L1935.35T-1520-V	M6	35	17.5	1520	80	40	1	16	3.5
L1935.35T-1600-V	M6	35	17.5	1600	80	40	1	16	3.5
L1935.35T-1680-V	M6	35	17.5	1680	80	40	1	16	3.5
L1935.35T-1760-V	M6	35	17.5	1760	80	40	1	16	3.5
L1935.35T-1840-V	M6	35	17.5	1840	80	40	1	16	3.5
L1935.35T-1920-V	M6	35	17.5	1920	80	40	1	16	3.5
L1935.35T-2000-V	M6	35	17.5	2000	80	40	1	16	3.5
L1935.35T-2080-V	M6	35	17.5	2080	80	40	1	16	3.5
L1935.35T-2160-V	M6	35	17.5	2160	80	40	1	16	3.5
L1935.35T-2240-V	M6	35	17.5	2240	80	40	1	16	3.5
L1935.35T-2320-V	M6	35	17.5	2320	80	40	1	16	3.5
L1935.35T-2400-V	M6	35	17.5	2400	80	40	1	16	3.5
L1935.35T-2480-V	M6	35	17.5	2480	80	40	1	16	3.5
L1935.35T-2560-V	M6	35	17.5	2560	80	40	1	16	3.5
L1935.35T-2640-V	M6	35	17.5	2640	80	40	1	16	3.5



LONG LINEAR RAILS

Order No.	d ₂ for screws	h ₁	h ₂	l ₁	l ₂	l ₃	r ₁	w ₁	w ₂
L1935.35T-2720-V	M6	35	17.5	2720	80	40	1	16	3.5
L1935.35T-2800-V	M6	35	17.5	2800	80	40	1	16	3.5
L1935.35T-2880-V	M6	35	17.5	2880	80	40	1	16	3.5
L1935.35T-2960-V	M6	35	17.5	2960	80	40	1	16	3.5
L1935.35T-3040-V	M6	35	17.5	3040	80	40	1	16	3.5
L1935.35T-3120-V	M6	35	17.5	3120	80	40	1	16	3.5
L1935.35T-3200-V	M6	35	17.5	3200	80	40	1	16	3.5
L1935.35T-3280-V	M6	35	17.5	3280	80	40	1	16	3.5
L1935.35T-3360-V	M6	35	17.5	3360	80	40	1	16	3.5
L1935.35T-3440-V	M6	35	17.5	3440	80	40	1	16	3.5
L1935.35T-3520-V	M6	35	17.5	3520	80	40	1	16	3.5
L1935.35T-3600-V	M6	35	17.5	3600	80	40	1	16	3.5
L1935.35T-3680-V	M6	35	17.5	3680	80	40	1	16	3.5
L1935.35T-3760-V	M6	35	17.5	3760	80	40	1	16	3.5
L1935.35T-3840-V	M6	35	17.5	3840	80	40	1	16	3.5
L1935.35T-3920-V	M6	35	17.5	3920	80	40	1	16	3.5
L1935.35T-4000-V	M6	35	17.5	4000	80	40	1	16	3.5
L1935.35T-4080-V	M6	35	17.5	4080	80	40	1	16	3.5